

Adding a 2nd machine to a single user system

Checklist:

- 1 Get your 2 machines networked
- 2 Install the Software on the 2nd machine
- 3 Share the data on the main machine
- 4 Change the Net Dir on the main machine to a network path
- 5 Delete existing .net and .lck files
- 6 Map a network drive to the main machine
- 7 Copy the existing TSS program and IDAPI32.cfg to the 2nd machine
- 8 Configure the 2nd machine to see the data on the 1st

1 **Get the 2 machines networked**

You need to do this before you start. If you cannot do this yourself, find someone who can do it for you. (A small, local company may be a good idea if you do not have a hardware support company.)

2 **Install the software on the new machine using an UP TO DATE CD / downloaded Install Set.**

(Please give us a couple of days notice if you want us to send you a CD.) You can download from:

<http://www.tssweb.net/Home/html/upgrade.html>

Click on TSS All Software under TSS Install Sets and follow the instructions

3 **Share the data on the main machine**

Go to the main machine

Right mouse click on the START button and choose EXPLORE.

Find the C: drive (may be listed as Local Disk or System (C:)) and RIGHT click

Choose SHARING AND SECURITY

Select NEW SHARE

Put C in the Share Name box

Press PERMISSIONS

Highlight EVERYONE at the top and tick the ALLOW column for FULL CONTROL

Press OK

Press OK again to the next screen and you should see your share

Press OK to this screen

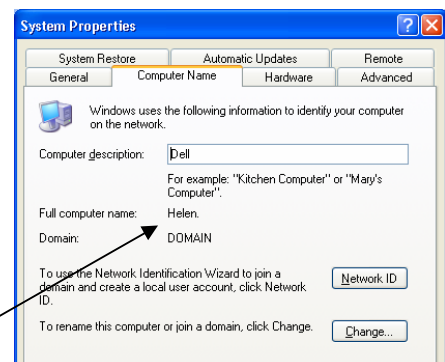
4 **Set the NETDIR on the main machine**

Click on START and go to CONTROL PANEL

If you cannot see NETWORK in the icons, click on SWITCH TO CLASSIC VIEW

Double Click Network

You should see ADVANCED at the top of the screen - click it



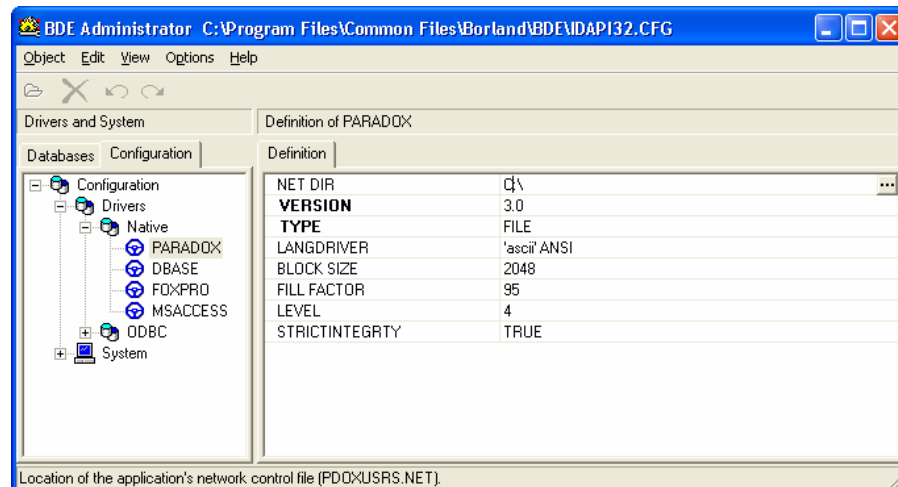
Choose NETWORK IDENTIFICATION

We need the FULL COMPUTER NAME (without the full stop)

Press CANCEL

Close NETWORK CONNECTIONS

Go back to START, CONTROL PANEL and this time double click BDE ADMINISTRATOR



Click on the CONFIGURATION TAB

Double click CONFIGURATION

DRIVERS

NATIVE

PARADOX

and you should see NET DIR on the top right

Click into the box and change C:\ to be

\\NAME OF THIS COMPUTER\C\tss

(e.g. if your computer was called Helen this would be \\Helen\C\tss)

Now click on the line below

Close BDE ADMINISTRATOR and when it asks you to Save All Edits? Say YES

Close Control Panel (if it is still open)

5 **Delete existing .net and .lck files**


Make sure NOBODY is using all Hire or Event CAD


Right mouse click on the START button and choose EXPLORE.

Find the C: drive and double click.

Now double click Program Files

Double click T.S.S

Find  Utils and double click

Press the  button to clear any automatic NET files

Close the Utils program.

6 **Map a Network drive from the new machine**

Go to the NEW machine

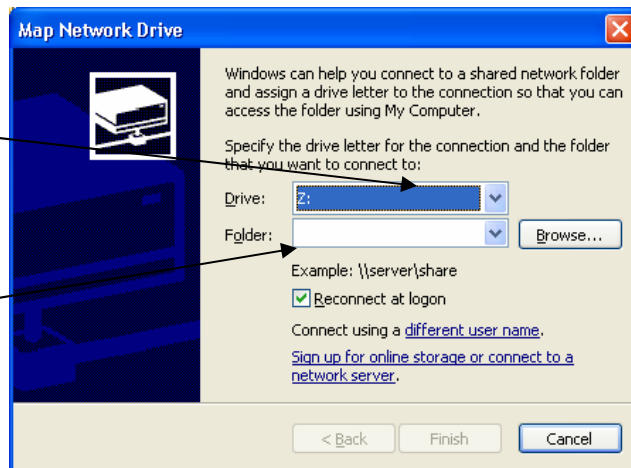
Right mouse click on the START button and choose EXPLORE.

Go to TOOLS at the top of the screen and select MAP NETWORK DRIVE

Set the DRIVE to be T

Fill in the information you used previously in the NET DIR box WITHOUT the TSS on the end (e.g. \\Helen\C)

Press FINISH



This should bring up a list of the files in the folder you have mapped – DO NOT CLOSE THIS BOX

7 **Copy the existing TSS program and IDAPI32.CFG to the 2nd machine**

In the folder that is open you should see PROGRAM FILES - double click it

Double click T.S.S (if you cannot see the files click SHOW FILES first)

Find  TSS

Right Mouse click on it and choose COPY

If you can see FOLDERS at the top click on it. If not, close the screen and Right mouse click on the START button and choose EXPLORE

Find the C: Drive

Double click Program Files

Right Mouse click on T.S.S and PASTE

Say YES to overwrite the existing program, even if it is older

Scroll down the list on the left and double click the T Drive (e.g. C on Helen (T:))

Double Click PROGRAM FILES

COMMON FILES

BORLAND

BDE

Find IDAPI32.cfg or IDAPI32 Configuration settings, right mouse click on it and choose COPY

Go the left of your screen and double click the C Drive (generally at the top of the list)

Double Click PROGRAM FILES

COMMON FILES

BORLAND

Then right mouse click on BDE and choose PASTE

Say YES to overwrite the existing file, even if it is older

Close Explorer

8 Configure the 2nd machine to see the data on the 1st

Press START

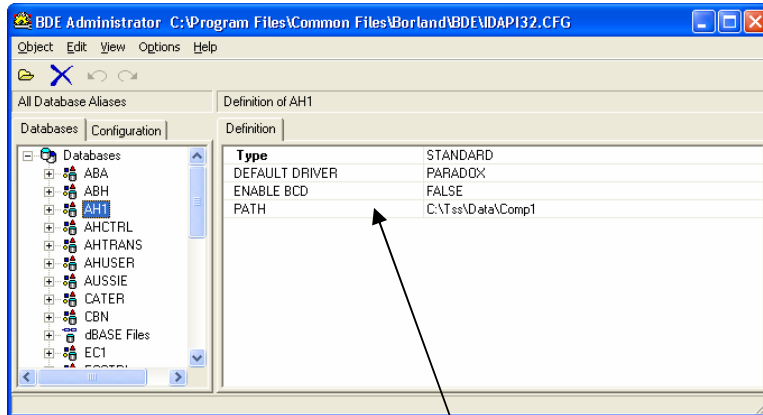
CONTROL PANEL

Double click BDE ADMINISTRATOR

Click on the DATABASES Tab

If you cannot see a list in the left hand column press the + sign next to Databases


In the list click on AH1



On the right at the bottom you will see PATH

It will probably be set to C:\Tss\Data\Comp1

Change the C:\ to T:\

(You can click into the box to do this or press the  button that appears on the right when you click it and browse for the path)

Do this for EVERY DATABASE in the list that begins C:\TSS

You can expect to see:

- AH1
- AHCTRL
- AHTRANS
- AHUSER
- CATER
- EC1
- ECCTRL
- LIN
- PROP
- TSS

and probably one other resembling your company name. (e.g. if your company name is Hire Company this may be HC or HIRE or similar)

When you have done them all click on any other database in the list and then close BDE ADMINISTRATOR and when it asks you to Save All Edits? Say YES

Close Control Panel (if it is still open)

You should now be able to get into all Hire / Event CAD on both machines at the same time. Please bear in mind that if you only have a Single User Licence you may get READ ONLY on the jobs from one of the machines.

Add a new machine onto a network with other machines - data on a Server

Install the software on the new machine using an UP TO DATE CD / downloaded Install Set.
(Please give us a couple of days notice if you want us to send you a CD.) You can download from:

<http://www.tssweb.net/Home/html/upgrade.html>

Click on TSS All Software under TSS Install Sets and follow the instructions.

Map a network drive with the SAME letter that the other machines (NOT the server / main machine) are using. (See **Mapping a Network Drive** for more information if you are unsure how to do this.)

Copy the correct version of the TSS.EXE file into the Program Files\T.S.S folder from a correctly setup machine.

Go to a network machine that is working correctly and make sure it is NOT in all Hire / Event CAD

Right mouse click on the START button and choose EXPLORE.

Find the C: drive (may be listed as Local Disk (C:)) and double click

Now double click Program Files

If you get a message saying the files are hidden, click to show the files

Find T.S.S in the list and double click.

Find TSS (with a red triangle next to it), right click on it and choose COPY

Now go to the LEFT hand side of the screen and find the Letter of the drive you have mapped (e.g. tss on server (T:))

Right mouse click on it and choose PASTE (say Yes if you are asked to overwrite).

Go back to the new machine.

Right mouse click on the START button and choose EXPLORE.

Find the mapped drive in the list and double click

Find TSS (red triangle), right mouse click and COPY

Now go to the LEFT hand side of the screen and find the C: drive and double click.

Double click Program Files

If you get a message saying the files are hidden, click to show the files

Right click on T.S.S and choose PASTE and YES to overwrite

Copy the Idapi32.cfg file

Go back to the network machine (not the new machine)

Right mouse click on the START button and choose EXPLORE.

Find the C: drive (may be listed as Local Disk (C:)) and double click

Now double click Program Files

If you get a message saying the files are hidden, click to show the files

Find Common Files and double click

Double click Borland

Double click BDE

Find Idapi32.cfg (or idapi32 configuration file) in the list, right mouse click and COPY



Now go to the LEFT hand side of the screen and find the Letter of the drive you have mapped (e.g. tss on server (T:))

Right mouse click on it and choose PASTE (say Yes if you are asked to overwrite).

Go back to the new machine.

Right mouse click on the START button and choose EXPLORE.
Find the mapped drive in the list and double click
Find Idapi32, right mouse click and COPY
Now go to the LEFT hand side of the screen and find the C: drive and double click.
Now double click Program Files
If you get a message saying the files are hidden, click to show the files
Find Common Files and double click
Double click Borland
Right click on BDE and choose PASTE and YES to overwrite

Run the Utils.exe program to delete any local .net files

Make sure NOBODY is using all Hire or Event CAD
Right mouse click on the START button and choose EXPLORE.
Find the C: drive and double click.
Now double click Program Files
Double click T.S.S
Find Utils  and double click
Press the  button to clear any automatic NET files
Close the Utils program.

You should now be able to run **all Hire** successfully from the new machine.

Mapping a Network Drive - copy of an existing one

If you have other machines that already have a Mapped Network Drive to the TSS data, you can get the details you need from one of them.

Go to one of these machines (not the main machine/server).

Right mouse click on the START button and choose EXPLORE.

Find the mapped drive in the list (probably towards the bottom) and make sure the screen is big enough to see the WHOLE name

It will say something like "TSS on server (T:) – WRITE IT DOWN.

Go back to the machine you need to map the drive on.

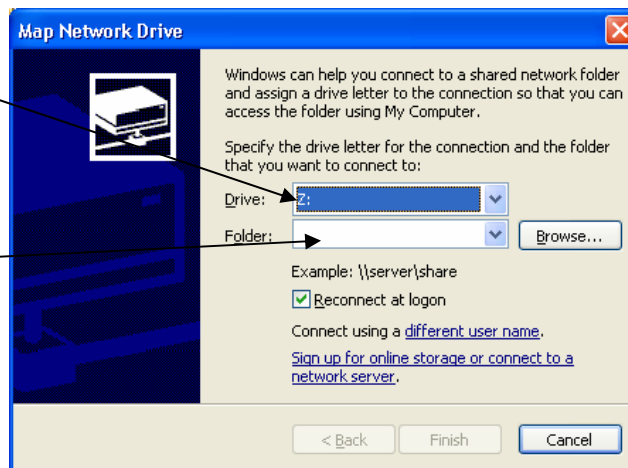
Right mouse click on the START button and choose EXPLORE.

Go to TOOLS at the top of the screen and select MAP NETWORK DRIVE

Set the DRIVE to be the same letter as on the other machine.

Fill in the information you wrote down previously in the FOLDER box. E.g. if you wrote TSS on Server (T:) you should fill in

\\server\TSS



Press FINISH

This should bring up a list of the files in the folder you have mapped - you can close this.

Your drive is now mapped and ready to use.

To move your TSS data to a new, stand alone, machine.

- 1) Copy the following files from your existing machine onto a CD / DVD / Memory Stick / other media:

The TSS folder from your C: drive (sometimes called Local Disk C:)

The T.S.S folder from your C: drive\Program Files folder (unless instructed not to do so).

The idapi32.cfg file from the c: drive\ Program Files \ Common Files \ Borland \ BDE folder.

Check that you can see these files on the CD / Memory stick / etc. if you eject it and put it back into the computer.

- 2) Install the software on the new machine using an UP TO DATE CD / downloaded Install Set. (Please give us a couple of days notice if you want us to send you a CD.) You can download from:

<http://www.tssweb.net/Home/html/upgrade.html>

Click on TSS All Software under TSS Install Sets and follow the instructions.

- 3) Copy the files from Step 1 to the SAME LOCATION you got them from on the new machine.

STEPS 4 - 6 APPLY ONLY TO WINDOWS VISTA MACHINES – IF YOU ARE NOT USING VISTA YOUR TSS / EVENT CAD SHOULD BE READY TO USE.

- 4) You will also need to change your net directory.

To be allowed to do this go to your START (funny circle) button, then into CONTROL PANEL.

Double click USER ACCOUNTS

Press Turn User Control On / Off

Give your permission to continue

UNTICK the Use User Account Control to help protect your computer box.

Press OK and choose Restart Now.

- 5) When you have turned off the User Control you will be able to alter the Net Directory.

Go to the Windows Circle / Start button.

Choose Control Panel

Double Click BDE ADMINISTRATOR

Click on the Configuration TAB
Then double click Configuration
Drivers
Native
Paradox

On the top right you will see NETDIR and it will probably be set to C:\

Change it to C:\TSS

Click on the line below

Close BDE Administrator

Press YES to Save All Edits.

- 6) You now need to delete the old .net file so that TSS / Event CAD will run.

Press your START (or Windows Circle) button

Choose Search

In the Search box type:
P*.net;p*.lck

You will see some files found. All of those called PDOXUSRS OR PARADOX .NET or .LCK should be DELETED.

WHEN THIS IS DONE YOU ARE READY TO USE TSS / EVENT CAD.